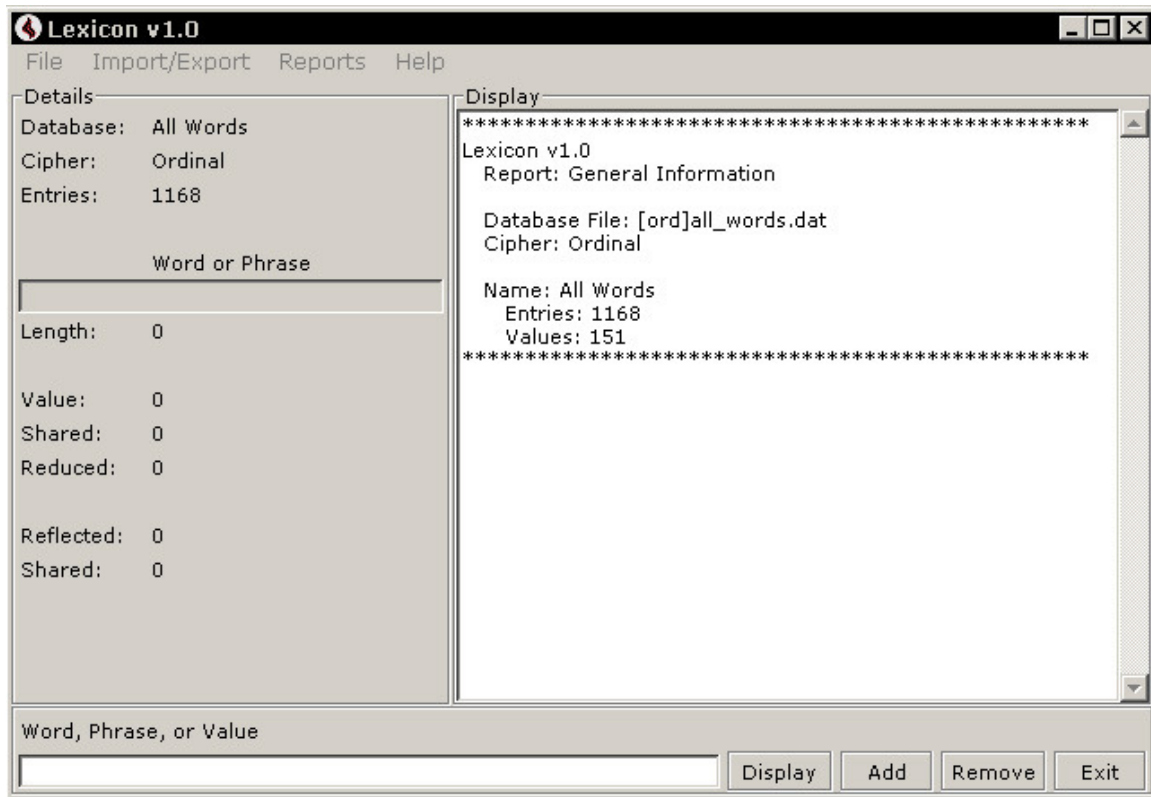


Lexicon v1.0

User Manual



Solitary Society

www.SolitarySociety.com

Table Of Contents

| | | |
|---|-------|---|
| 0.0 Technical Details | | 3 |
| 1.0 What is Lexicon | | 3 |
| 2.0 Using Lexicon | | 3 |
| 2.1 Installing and Uninstalling Lexicon | | 3 |
| 2.2 General Use | | 4 |
| 2.3 Lexicon Database Operations | | 4 |
| 2.4 Lexicon Cipher Manager | | 5 |
| 2.5 Lexicon Reports | | 5 |
| 2.6 Note-keeping in Lexicon | | 6 |
| 2.7 Import & Export | | 6 |
| 3.0 Additional Information | | 7 |
| 4.1 License and Source Code | | 7 |
| 4.2 Resources | | 7 |
| 4.3 Further Reading | | 7 |

0.0 Technical Details

Title: Lexicon
Version 1.0
Date: February 4, 2009
Revision: 1.0
Author: Solitary Society
www.solitarysociety.com

Lexicon was written with Python 2.4.4 and tested with Python 2.5.4 on Microsoft Windows XP. Lexicon was compiled to a Windows executable using py2exe and the installer was created with Inno Setup compiler.

For License and Source code information see section 3.1.

1.0 What is Lexicon

Lexicon is a gematria calculator for the English language. Lexicon features several ciphers included with the ability to support a database and several report functions. Users may also add or create additional ciphers. Lexicon also supports the ability to handle basic text files for keeping notes.

Lexicon is designed to allow the user to focus more time and concentration on the study of the theory of numbers, letters, and language.

2.0 Using Lexicon

This application is very simple to use. The results you get will be entirely up to you and the amount of effort and philosophy you give to the study. The sub sections following will cover the basic details of Lexicon.

2.1 Installing and Uninstalling Lexicon

To install Lexicon, double click the file 'lexicon_setup.exe' and follow the instructions in the installer.

The installer will give you the options of placing a shortcut on your desktop and also will create the uninstaller, should you want to remove Lexicon at any time.

To uninstall Lexicon, go to the folder where Lexicon has been installed to. Find the uninstaller and double click it. This will remove Lexicon from your computer.

Lexicon does not place any keys in the Windows Registry, or place any files outside of its install path.

2.2 General Use

When the cursor is in the 'Word, Phrase, or Value' entry field, there are several key commands for assisting with using Lexicon.

Key Commands

| | |
|---------------|--|
| <i>Ctrl-a</i> | Adds the text in the entry field to the database. |
| <i>Ctrl-r</i> | Removes the text in the entry field from the database. |
| <i>Ctrl-c</i> | Clears the text from the entry field. |
| <i>Return</i> | Display the value of the text in the entry field. |

All other commands and options are available through the drop menu commands.

2.3 Lexicon Database Operations

Import and Backup

To add additional databases to Lexicon or to backup existing databases, go to the folder /Lexicon/database/. The database files end with the .dat extension. You can copy, past, and delete them. The next time the database manager is opened, the list will be updated.

Load Database

This command will load the selected database and the cipher associated with it. Once a database is loaded, the user is able to begin processing words or phrases.

New Database

The first time Lexicon is run, you will be required to create a new database. It is recommended that this file is named similar to the name of the cipher so it can easily be located when selecting a cipher to associate with a database.

First step, select which cipher to use for the database. This will show in the filed underneath the list box once selected. To select the cipher, double click on the desired name.

Second step, enter the name of the database. This can be any string of text and will be displayed on the main window when this database is loaded.

Third step, enter the name of the file to save the database as. The user does not need to include the .dat extension. This file will be saved to the 'database' folder in the Lexicon install path

Rename Database

This command will allow the user to rename the selected database.

Delete Database

This command will allow the user to delete the selected database.

2.4 Lexicon Cipher Manager

New Cipher

Allows the user to create custom ciphers for use within Lexicon.

When creating a new cipher, the file name field is able to be edited. The user must enter a name for the file of the cipher to be saved. It is also suggested to enter the author name and some information regarding the cipher.

Edit Cipher

Allows the user to modify the values and other data in a cipher.

When editing a cipher, the file name field is disabled. The user cannot rename the file from this window. Any modifications to the cipher that are saved, are permanent.

Rename Cipher

This command will allow the user to rename the selected cipher.

Delete Cipher

This command will allow the user to delete the selected cipher.

Cipher Details (from the File menu)

This will display the additional information text from a cipher if available.

Cipher Values (from the File menu)

This will display the values of each letter in the cipher.

2.5 Lexicon Reports

General Report

This report displays general information about Lexicon and the current database.

All Entries By Alpha

This report displays a list of all the entries sorted in alphabetical order by their first character.

All Entries By Value

This report displays all entries grouped by value. The list is sorted by value.

Individual Alpha

This report will prompt the user for a letter of the alphabet. The report will display all entries which begin with that letter.

Values In Range Of

This report will display the values within a range specified by the user. The report will prompt the user for several values, Low, High, and Step.

The Low value will be the start of the report, while the High value would be the end of the range. The Step value will be the number of values to skip after each value is collected for the report.

For example, you want to generate a report for the values between 80 and 90 by 2. As the Low value you enter 80, the High value would be 90 and Steps would be 2. This would then generate a report of the values 80, 82, 84, 86, 88, 90.

2.6 Note-keeping in Lexicon

Lexicon offers support for basic note-keeping using plain text files. These files are stored in `\Lexicon\notes\`.

Lexicon displays the current open file just above the text box.

2.7 Import & Export

Import Word List

This command will prompt the user for a word list. This should be in the format of a text file with one word on each line. The newly imported words will be added to the currently loaded database.

Export Word List

This command will generate a text file containing each entry in the database on its own line. The user will be prompted for the name of the file and location to save this as.

Export Display (text)

This command will dump all the text in the Display buffer and save it to a text file. The user will be prompted for the file name and location to save this as.

Export Display (HTML)

This command will dump all the text in the display buffer and save it to a html file for displaying within a web browser. The user will be prompted for a file name and location to save this as.

3.0 Additional Information

Lexicon has been released under the Creative Commons Attribution license. This is the most flexible license I was able to find.

3.1 License and Source Code

The full text of the license can be read either in the 'license.txt' located at \Lexicon\license.txt, or online at the Creative Commons website.

Full license text:

<http://creativecommons.org/licenses/by/3.0/legalcode>

Human readable form of above link:

<http://creativecommons.org/licenses/by/3.0/>

The /src/ directory contains the source code for Lexicon, the setup.py (py2exe) script, and also the Inno Setup script.

3.2 Resources

Ciphers

Additional ciphers shared by Lexicon users can be found at the Solitary Society website at:

<http://www.solitarysociety.com/lexicon/download.html>

Details on submitting ciphers for sharing may also be found at the link above.

3.3 Further Reading

Several texts are available in the Solitary Society Library online at <http://www.solitarysociety.com/library.html>

Ancient Landmarks: The Pythagorean Science of Numbers
From the works of H. P. Blavatsky.

Numbers: Their Occult Power and Mystic Virtues
W. Wynn Westcott

Symbolism of Numbers
From the works of H. P. Blavatsky

In addition to these texts mentioned here, any other source of information regarding numerology or mystic number theory, may be helpful.